

*David S. Silmore*  
FOUNDATION



2024 ANNUAL GRANTMAKING REPORT



# HISTORY & MISSION

The mission of the Irving S. Gilmore Foundation is to support and enrich the cultural, social and economic life of Greater Kalamazoo.

Irving S. Gilmore demonstrated a sincere commitment to Kalamazoo through his caring, kindness and support. In simple, elegant ways, Mr. Gilmore inspired the community to pursue a strong sense of social and cultural awareness for the benefit of all people.

A uniquely multifaceted individual, Irving Gilmore was a merchant, an arts patron, a concert-quality pianist, a business leader and a military veteran. He was also a gentle man with a dry sense of humor who showed heartfelt compassion for others around him. Throughout his life, Mr. Gilmore helped by sharing his good fortune with others less fortunate.

Irving Gilmore shunned the spotlight, preferring instead to contribute in a quiet, dignified manner. He showed his concern through frequent and often anonymous gifts that addressed a wide range of needs. In addition to sharing

**“Mr. Gilmore inspired the community to pursue a strong sense of social and cultural awareness for the benefit of all people.”**

numerous financial gifts with the community, he worked to help others gain the skills needed to help themselves.

Mr. Gilmore found his greatest joy in the arts, for which he showed unwavering support. He not only helped gifted individuals express their unique talents, but encouraged others to support the creative expressions of the human spirit as both artists and audience. He knew that cultural and performing arts needed support to grow. He also knew that the arts offered powerful instrumental benefits. Indeed, Mr. Gilmore understood that the arts catalyze imaginative practices in and across community sectors.

Looking ahead, Mr. Gilmore wanted to provide for his community in perpetuity, ensuring that his special personal philanthropy would live on. In 1972, Mr. Gilmore established the Irving S. Gilmore Foundation and arranged for it to receive the bulk of his estate upon his death. Mr. Gilmore passed away in 1986 at the age of 85, leaving Kalamazoo a wonderful legacy.

Just as he encouraged others to unlock their own potential, today the Foundation funds key organizations that help unlock the community’s potential. Through the Foundation that bears his name, Mr. Gilmore’s commitment to the people of the Kalamazoo community lives on.

# GRANT POLICIES

In accordance with the example and directives of its founder, the Irving S. Gilmore Foundation encourages grant applications from Kalamazoo area nonprofit, tax-exempt organizations whose work benefits or will benefit the community. The Foundation does not make grants to individuals. The Foundation Trustees will make all decisions regarding the funding of proposals without discrimination on the basis of race, religion, color, sex, height, age, sexual orientation, gender identity, weight, marital status, genetic information, disability, military status or national origin of the organization’s staff or volunteers. It is expected that all beneficiaries of funding from the Irving S. Gilmore Foundation will adhere to existing state and federally mandated affirmative action policies.

## HOW TO APPLY

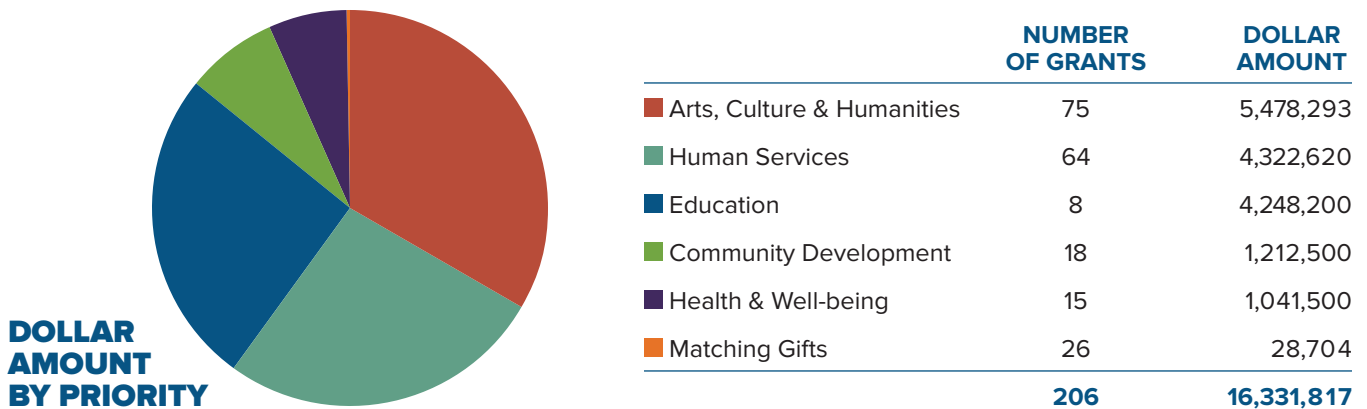
Please visit our website at [www.isgilmore.org](http://www.isgilmore.org) for detailed funding guidelines and proposal submission deadlines.

The Priorities of the Foundation are:



## 2024 GRANTS SUMMARY

In 2024, the Foundation’s Trustees approved 180 grants. The Foundation also matched 26 charitable gifts made by the Trustees and Staff. The following chart illustrates the total grants awarded by each program area, as well as gifts matched:



# NONPROFITS: THE HEART AND SOUL OF KALAMAZOO'S COMMUNITIES



BY RICHARD M. HUGHEY, JR., EXECUTIVE VICE PRESIDENT / CEO

**N**onprofit organizations, through their tireless work, are the heart and soul of our communities. We at the Irving S. Gilmore Foundation are honored to support many local organizations, and we believe that their work should be celebrated.

We have invited a representative sample of our grantees to highlight their efforts on the pages that follow. Reading through their stories, I think you will be impressed by the tremendous impact these organizations have on our community. We are very grateful for their efforts.

As we look toward the future, we are thankful that Mr. Gilmore had the foresight to set up his namesake foundation to operate in perpetuity. We are delighted to continue supporting Kalamazoo's nonprofit sector for years to come.

*Richard M. Hughey, Jr.*

# ARTS, CULTURE & HUMANITIES

The Foundation promotes the enjoyment, understanding, appreciation and/or instrumental use of visual arts, performing arts, media arts, communications, humanities, and history.

## ARTS COUNCIL OF GREATER KALAMAZOO – KALAMAZOO ARTISTIC DEVELOPMENT INITIATIVE

The Kalamazoo Artistic Development Initiative (KADI) grant has had a transformative impact on individual artists within the community, serving as a vital source of support and empowerment. It enables artists to focus more fully on their creative practices without the constant pressure of securing income through unrelated jobs. This freedom fosters deeper artistic exploration, experimentation and production, elevating the quality and originality of local art.



Over the past three years, the need for this program has doubled due to dwindling access to other sources of grant income and support. As traditional funding streams have decreased or disappeared, the KADI grant has become increasingly crucial for sustaining artistic careers. It is now one of the only grants available specifically to individual artists in the county, making its presence even more essential.

In the most recent cycle, the program supported 45 individual

artists and their projects or professional development opportunities. This allowed recipients to purchase materials, upgrade equipment, rent studio space or invest in training. Such support enhanced their creative work and expanded their reach within the community.

The KADI grant also strengthens the local cultural landscape. By uplifting diverse artistic voices – especially those from underrepresented backgrounds – it enriches the community’s

collective narrative. Supported artists often give back through workshops, public art and mentorship, further amplifying the program’s impact.

The ripple effect is clear: when artists thrive, communities grow stronger, more connected and more inspired. The KADI grant remains a crucial investment in the creative future of the region.

For more information, visit [www.kalamazooarts.org/grants/kadi](http://www.kalamazooarts.org/grants/kadi)

## KRESA EDUCATION FOR THE ARTS

In 2024/25, Kalamazoo RESA– Education for the Arts (EFA) celebrates 30 years of creating and sustaining innovative arts education programming and partnerships in Kalamazoo County with nine public K-12 school districts, special ed programs and alternative ed schools, higher education and community arts organizations. In October 2024, the Arts Schools Network awarded EFA the 2024 Arts Innovation Award.

EFA’s innovative structure of community and educational partnerships, fueled by a unique fiscal model of public, philanthropic and endowment funding, enables flexibility and a mind-set of experimentation.

EFA’s arts programming is equitably accessible for all 25,000 K-8,

special ed program and alternative ed students in Kalamazoo County. Additionally, approximately 700

Kalamazoo County high school students annually attend EFA classes in every artform.



Nationally, KRESA-EFA staff have served in board and committee leadership roles with the Lincoln Center Institute of Aesthetic Education, the Association of Aesthetic Ed Institutes and Americans for the Arts – State Arts Education Public Policy

Program. Michigan leadership has included the Council of Michigan Foundations, Creative Many Michigan and Michigan Youth Arts Association. Locally, staff have helped lead the Kalamazoo Cultural Center and Arts Council of Greater Kalamazoo.

KRESA-EFA has received a statewide arts organization Guvvy Award from ArtServe Michigan and three EFA instructors have won Michigan Arts Teacher of the Year awards.

For more information, visit [www.kresa.org/page/265](http://www.kresa.org/page/265)

---

## STULBERG INTERNATIONAL STRING COMPETITION

The mission of the Stulberg International String Competition is to promote excellence in string instrument performance by gifted artists under the age of twenty. The Stulberg’s vision is to deepen community engagement while offering a premier string competition.

The Stulberg International String Competition was founded in 1975 in memory of Julius Stulberg, longtime violin teacher and

conductor of the Western Michigan University and Kalamazoo Junior Symphony orchestras. The Stulberg provides performance and educational opportunities for young string instrument (violin, viola, cello, double bass) musicians to develop essential skills and prepare for their professional performance careers.

The Stulberg uses a blind screening process every year to select twelve string instrument

semifinalists from applicants from around the world. Each semifinalist travels to Kalamazoo in May to compete for three medal prizes before a jury of distinguished judges. All Stulberg competition events are open to the Kalamazoo public.

The 2024/25 Stulberg is the fiftieth anniversary of the competition, and the Stulberg is celebrating its first fifty years with special performances, print and media events, a new commission of a solo string work and a gala.

Over 2,500 young string musicians have participated in the first half-century of the Stulberg International String Competition. The list of past medalists is a veritable international Who’s-Who of string musical artists and teachers. Notable Stulberg alumni include Joshua Bell, Anthony Ross, Rachel Barton Pine, Wendy Warner, Nicholas Schwartz, Lucia Lin, Catherine Basrak.

For more information, visit [www.stulberg.org](http://www.stulberg.org)



# 2024 ARTS, CULTURE & HUMANITIES GRANTS

**African Methodist Episcopal Church**  
Youth Summer Music Programming

**Arts Council of Greater Kalamazoo**  
General Operations  
Kalamazoo Artistic  
Development Initiative  
Programming  
Theatre Kalamazoo  
(Fiscal Sponsorship)

**Ballet Arts Ensemble**  
General Operations

**Black Arts & Cultural Center**  
General Operations

**Center Stage Theatre**  
General Operations  
Facility Improvements

**Chef and Cooks Association of  
Kalamazoo Battle Creek Michigan**  
Canadiana Fest  
(Fiscal Sponsorship)

**Comstock Public Schools**  
Equipment

**Comstock, Township of**  
Programming

**Crescendo Academy of Music**  
General Operations  
Marvelous Music!

**Face Off Theatre Company**  
General Operations

**Farmers Alley Theatre**  
Equipment  
General Operations

**Fire Historical and Cultural Arts  
Collaborative**  
General Operations

**Fontana Chamber Arts**  
General Operations

**Glass Art Kalamazoo**  
Equipment  
General Operations

**Grand Valley University Foundation**  
WGVU Great Performances  
WGVU Kalamazoo Lively Arts

**Helen L. Fox Gospel Music Center**  
General Operations

**Hispanic American Council  
(El Concilio)**  
Folkloric Dance Group Programming

**Irving S. Gilmore International  
Keyboard (Piano) Festival**  
Equipment  
General Operations

**Julius & Esther Stulberg Competition**  
General Operations

**Kalamazoo Aviation History Museum  
(Air Zoo)**  
Strategic Master Plan

**Kalamazoo Book Arts Center**  
General Operations

**Kalamazoo Children's Chorus**  
General Operations

**Kalamazoo Choral Arts**  
Technical Assistance

**Kalamazoo Civic Theatre**  
General Operations

**Kalamazoo College**  
Facility Improvements

**Kalamazoo Concert Band  
Association**  
Holiday Concert  
Management Assistance

**Kalamazoo Cultural Center**  
Facility Improvements  
General Operations

**Kalamazoo Institute of Arts**  
General Operations

**Kalamazoo Junior Symphony Society**  
General Operations

**Kalamazoo Male Chorus**  
General Operations  
Programming

**Kalamazoo Nonprofit  
Advocacy Coalition**  
Capacity Building

**Kalamazoo Poetry Festival**  
General Operations

**Kalamazoo Regional Educational  
Service Agency**  
Education for the Arts  
General Operations  
Education for the Arts  
Student Artistic Equipment Program  
Education for the Arts  
Student Arts Scholarships

**Kalamazoo Ringers**  
Programming

**Kalamazoo Scottish  
Festival Association**  
Production Costs

**Kalamazoo Symphony Orchestra**  
General Operations  
Kalamazoo Kids in Tune and  
Orchestra Rouh

**Kalamazoo Valley Blues Association**  
Festival Programming

**Michigan Bach Collegium  
(Early Music Michigan)**  
General Operations

**Michigan Festival of Sacred Music**  
General Operations

**Milwood United Methodist Church**  
Fine Arts Series

**New Year's Fest of Kalamazoo**  
Festival General Operations

**Parchment, City of**  
Kindleberger Summer Arts Program

**Portage, City of**  
The HeART of Portage

**Public Media Network**  
All Ears Theatre (Fiscal Sponsorship)  
General Operations  
SW MI Journalism Collaborative  
(Fiscal Sponsorship)

**Queer Theatre Kalamazoo**  
General Operations

**Renaissance Enterprises Company**  
Kalamazoo County Programming

**Richland Area Community Center**  
Programming

**Rootead Enrichment Center**  
Youth Programming

**Speak It Forward**  
General Operations

**Suzuki Music Academy  
of Kalamazoo**  
General Operations  
Orchestra Jammbo'laya

**Vicksburg Cultural Arts Center**  
General Operations

**Vicksburg Historical Society**  
Programming

**Vine Neighborhood Association**  
Sounds of the Zoo  
(Fiscal Sponsorship)

**Wellspring/Cori Terry & Dancers**  
General Operations

**Western Michigan University  
Foundation**  
WMUK Expanded Arts Kalamazoo  
WMUK Underwriting

# HUMAN SERVICES

The Foundation supports youth development, life skills, food and nutrition, public safety, parks and recreation, and other social/human services that benefit individuals, families and neighborhoods. However, the Foundation does not generally support athletics and only nominally supports housing and shelter.

## COMMUNITY HOMEWORKS

In 2024, Community Homeworks proudly celebrated 15 years of helping families remain in their homes through critical repairs, homeowner education and tool lending.

The critical home repair program provides essential support to income-qualified homeowners, addressing urgent health and safety repairs to prevent displacement and preserve homeownership as a path to generational wealth. Demand continues to grow,



particularly in Kalamazoo’s core neighborhoods, where aging homes require vital investment. Community Homeworks also expanded its service area in recent years to cover all of Kalamazoo County.

Recognizing evolving needs, the organization enhanced support for expectant mothers and families with young children, historic district homeowners and those facing code violations. Additionally, it assisted Portage and Pavilion Township residents affected by the May 7 tornado.

Beyond repairs, hands-on education workshops equip homeowners with skills to maintain their homes. Offering 40 to 50 sessions annually – both in-person and online – the program increases accessibility through outreach and satellite locations.

Looking ahead, the launch of the new Tool Library program will further empower homeowners with access to essential tools and supplies, fostering self-sufficiency in home maintenance.

Together, these three core programs – critical home repairs, education and tool lending – create a holistic support system that strengthens families, preserves homes and sustains vibrant neighborhoods.

For more information, visit [www.communityhomeworks.org](http://www.communityhomeworks.org)

## FAMILY & CHILDREN SERVICES

Since 1903, Family & Children Services has been a source of hope for those who need it most in our community. Our mission is simple but powerful: to strengthen the safety and well-being of children, individuals and families. Every day, we bring this mission to life by providing essential child welfare and behavioral health services to individuals facing extraordinary challenges.

The families and children we serve have endured complex trauma – often shaped by poverty, homelessness, mental illness, substance use, violence and abuse. In these moments of hardship, we stand beside them, offering compassionate, trauma-informed and strength-based care. We believe in their resilience and are committed to helping them rebuild their lives with dignity and hope.

At the heart of our work is our dedicated team of human service

workers and clinicians. Each year, they provide critical support to nearly 4,500 individuals – 2,400 of whom are children, most living below the federal poverty line. Their work is deeply meaningful, and requires exceptional skill, dedication and heart. Thanks to a generous grant from the Irving S. Gilmore Foundation, we’ve launched an innovative workforce development initiative. This program is more than just training – it’s about cultivating the next generation of human service professionals and equipping them with the skills, experience and support they need to thrive in this vital field.

Together, we are shaping a future where every child, individual and family has the opportunity to heal and flourish.

For more information, visit [www.fcsource.org](http://www.fcsource.org)





## GIRLS ON THE RUN GREATER KALAMAZOO

Girls on the Run helps girls recognize their potential and rise above limiting gender expectations. Our programs are about much more than running – they blend physical activity with life skill development to help girls discover and build their self-confidence.

This year, Girls on the Run Greater Kalamazoo has made significant strides in expanding access to opportunities for girls, fostering confidence and breaking down financial barriers. Through targeted outreach and strategic support, we have increased girls' registration by 6 percent, ensuring more young participants can engage in meaningful programming that enhances their skills, leadership and future potential.

Recognizing that financial constraints often limit access, we used a sliding scale scholarship model that provided financial assistance to 51 percent of participants. This commitment to equity ensured that every girl, regardless of economic background, had the opportunity to benefit from our program's transformative experiences.

Beyond the numbers, our real impact is seen in the personal stories of the girls we serve. From first-time participants discovering their voices to returning members stepping into leadership roles, the program is cultivating a generation of confident, empowered young women.

Parents and educators alike have praised the program for its inclusive approach and tangible outcomes, noting improvements in academic engagement, social skills and long-term aspirations among participants. With the support of donors and partners, we continue to build a future where every girl has access to the tools and encouragement she needs to thrive.

Thank you for championing this mission alongside us. Together, we are shaping brighter futures.

For more information, visit [www.girlsontherunkazoo.org](http://www.girlsontherunkazoo.org)

# 2024 HUMAN SERVICES GRANTS

**AACORN Farm**

General Operations

**Alano Club of Kalamazoo**

Facility Improvements

**Arc Community Advocates**

General Operations

**ASK Family Services**

General Operations

**Big Brothers Big Sisters  
of Southwest Michigan**

General Operations

**Bike Friendly Kalamazoo**

General Operations

**Boys & Girls Clubs  
of Greater Kalamazoo**

General Operations

**Bureau of Services for Blind Persons**

Facility Improvements

**Calhoun County Guardian**

Capacity Building

**Can-Do Kalamazoo**

General Operations

**Center for Transformation**

General Operations

**City of Kalamazoo Department  
of Public Safety**

Capacity Building

**Communities in Schools  
of Kalamazoo**

General Operations

**Community Healing Centers**

S.T.R.E.E.T. and Niñas del  
Corazón Programs

**Community Homeworks**

General Operations

**Confident S.O.L.E.**

Programming

**Disability Network Southwest  
Michigan**

Independent Living Program

**Douglass Community Association**

Facility Improvements  
General Operations

**Ecumenical Senior Center**

General Operations

**Edison Neighborhood Association**

Programming  
The Clover Room  
(Fiscal Sponsorship)

**Family & Children Services**

Programming

**Fathers Against Distracted Driving**

General Operations

**First Congregational Church**

Child Care Center  
(Fiscal Sponsorship)

**First Day Shoe Fund**

General Operations

**Friends With Disabilities**

Programming

**Friendship House**

Programming

**Girl Scouts Heart of Michigan**

Facility Improvements

**Girls On The Run Greater Kalamazoo**

General Operations

**Goodwill Industries  
of Southwestern Michigan**

GAP Program  
Life Guides Program

**Gryphon Place**

Kalamazoo Community  
Information Exchange

**Housing Resources, Inc.**

General Operations

**Junior Achievement  
of Southwest Michigan**

General Operations

**Kairos Dwelling**

Facility Improvements  
General Operations

**Kalamazoo Center For Youth  
& Community**

Programming

**Kalamazoo Housing Advocates**

General Operations

**Kalamazoo Loaves and Fishes**

Grocery Pantry Program  
Strategic Planning

**Kalamazoo Neighborhood  
Housing Services**

General Operations

**Kalamazoo Valley Habitat  
for Humanity**

General Operations

**Kalamazoo Youth  
Development Network**

General Operations

**Men of Purpose**

General Operations

**Michigan Blind Athletic Association**

General Operations

**Michigan State University**

Kalamazoo Rx Kids Program

**Ministry with Community**

General Operations

**Open Doors Kalamazoo**

General Operations

**Open Roads Bike Program**

Feasibility Study  
General Operations

**Portage Community  
Outreach Center**

Youth Programs

**Pretty Lake Vacation Camp**

Facility Improvements

**Residential Opportunities, Inc.**

Affordable Housing Program  
Representative Payee Services

**St. Luke's Episcopal Church**

Partners in Transition Program

**Synergy Health Center**

UrbanZone Program

**United Way of the Battle Creek  
and Kalamazoo Region**

Disaster Relief Fund

**Urban Alliance**

Facility Improvements  
General Operations

**Young Kings and Queens**

Programming

**Young Women's****Christian Association**

Early Learning Childcare Program

# EDUCATION

The Foundation supports educational programs and activities that enhance the capacity for life-long learning. However, the Foundation does not generally support core operations and programming of K-12 educational institutions.

## KALAMAZOO VALLEY COMMUNITY COLLEGE

For almost 60 years, Kalamazoo Valley Community College has been a cornerstone of local workforce development, creating innovative and equitable opportunities that empower all to learn, grow and thrive. Now, the college's 30-year-old Advanced Technology Center at the Texas Township campus is set for a major renovation, empowering Kalamazoo Valley to meet the evolving demands of technology and the growing need for skilled professionals.

Kalamazoo Valley plans to renovate its 68,000-square-foot technology center to create flexible, state-of-the-art, industry-relevant classrooms with spaces for community collaboration. In this

new space, we will train the next generation of electricians, machine tool engineers and manufacturing technologists, computer aided-designers, builders, HVAC technicians, energy systems specialists and welders. In addition, a new 20,000-square-foot automotive lab will support new programs in hybrid and electric vehicle technology, renewable energy storage systems and autonomous vehicle features.

Our region's ability to attract and grow new businesses depends on a reliable pipeline of skilled workers. Every skilled trade is in urgent need of workers. The improvements Kalamazoo Valley is making today will help expand the college's role in forging future

generations of a well-prepared, skilled workforce. In these innovative classrooms and labs, emerging talent can retrain or increase their skills locally without leaving the area.

Kalamazoo Valley's inclusive mission invites people from all walks of life to learn together in our classrooms. This renovation will open up even more room for anyone who wants to enter the exciting, good paying careers in the evolving technical trades.

For more information, visit [www.kvcc.edu](http://www.kvcc.edu)



## 2024 EDUCATION GRANTS

**Friends of the Kalamazoo Public Library and Museum**  
Capacity Building

**Kalamazoo County Ready 4s**  
General Operations

**Kalamazoo Literacy Council**  
Albert White Literacy Trail  
General Operations

**Kalamazoo Valley Community College Foundation**  
Capital Campaign  
Feasibility Study

**Read and Write Kalamazoo**  
General Operations

**Specialized Language Development Center (SLD Read)**  
Kalamazoo County Programming

# COMMUNITY DEVELOPMENT

The Foundation promotes quality of life through appropriate investments that strengthen, unify and build community spirit, and enhance capacity for innovation and growth.

## CITY OF KALAMAZOO – MOUNTAIN HOME CEMETERY REVITALIZATION PROJECT

As former Historic Preservation Coordinator Sharon Ferraro has said, “One of the best and most accessible places to learn the history of a community is to walk around the earliest cemetery.”

Mountain Home Cemetery, located in the West Douglas Neighborhood of Kalamazoo, is a historic burial ground that reflects the city’s rich history. Established in 1849, it was initially a private cemetery, becoming public in 1940 when it was purchased by the City of Kalamazoo. The cemetery has beauty and character in abundance, from its gently rolling landscape to the variety of monuments located within its grounds.

The history of Kalamazoo is woven into the landscape of the cemetery, where the stories of its past residents are etched into the monuments and gravesites that line its winding roads. It is the final resting place of hundreds of families that helped shape Kalamazoo, including the Upjohns, Fetzers and Ransoms. If you compare the names of city streets to the names within the cemetery, you find it not only rich in character, but also rich in history.

The Irving S. Gilmore Foundation has graciously supported infrastructure improvements in the cemetery, preserving the rich

history. This financial assistance enabled the restoration of deteriorated roadways and failing storm drainage systems, as well as repairs to retaining walls. These crucial improvements were vital for maintaining the resting place of numerous early community leaders, ensuring that Kalamazoo’s history remains intact for future generations.

For more information, visit [www.kalamazoo.org/community/cemeteries/mountain-home-cemetery](http://www.kalamazoo.org/community/cemeteries/mountain-home-cemetery)



Photograph courtesy of Carol Duck.

## 2024 COMMUNITY DEVELOPMENT GRANTS

**Action Matters**

Programming

**Building Blocks of Kalamazoo**

General Operations

**Citizen's Research Council of Michigan**

Programming

**Comstock, Township of**

Riverfront Redevelopment Project

**Council of Michigan Foundations**

General Operations

**First Congregational Church**

Community Outreach Programming

**Gryphon Place**

Volunteer Services Programming

**Interfaith Strategy for Advocacy and Action in the Community**

General Operations

**Kalamazoo, City of**

Holiday Events

**Kalamazoo Community Foundation**

Equipment

**Kalamazoo Experiential Learning Center**

General Operations

**Kalamazoo In Bloom**

40th Anniversary Activities  
General Operations

**Northside Association for Community Development**

Capacity Building

**Southwest Michigan First Corporation**

General Operations

**Tides Center**

Michigan Transformation Collective  
Community Violence Intervention  
(Fiscal Sponsorship)

**United Way of the Battle Creek and Kalamazoo Region**

Annual Campaign  
Leadership Campaign Challenge

# HEALTH & WELL-BEING

The Foundation promotes health and wellness programs and activities that enhance the physical, mental and emotional needs of individuals.

## CARES SEXUAL WELLNESS SERVICES

Cares of Southwest Michigan was started by activists in 1985 in response to AIDS, providing a place for people to ask questions about HIV and share information about HIV across the state. That

collaborative spirit in the face of uncertainty remains a pillar of the organization.

Today, Cares' mission is to provide comprehensive sexual wellness

services where all participants feel welcome, well-informed, cared for and loved. Its vision is a community of individuals – regardless of status, position or background – that are empowered to navigate their own sexual health and wellness without shame, stigma or judgment.

We do this through case management and housing assistance for people living with HIV; STI and HIV prevention, testing and education; and our clinic, Iridescent Health, which provides LGBTQ primary and gender affirming care as well as HIV medical care and primary care.

Cares has always been focused on providing services where it is most convenient for clients. To that end, The Irving S. Gilmore Foundation



graciously funded a mobile clinic for Cares, increasing our ability to provide HIV and STI testing and medical care in Kalamazoo County. We have used our mobile unit at

OutFront Kalamazoo and plan to use it at area Pride events and throughout the community.

Our goal is to work with community partners in providing care through

the mobile clinic to help de-stigmatize HIV and STI testing as well as to share resources.

For more information, visit [www.caresswm.org](http://www.caresswm.org)

## EVERSIGHT

Established in 1947, Eversight's mission is to restore sight and prevent blindness through the healing power of donation, transplantation and research. We screen cornea tissue donors; evaluate donor eligibility; and recover, process and provide human eye tissue for transplantation to those in need worldwide.

Poor eye health can have a detrimental effect on mortality, quality of life, independence and a person's economic situation. One of the leading causes of vision impairment is corneal-related blindness, which can be cured through a corneal transplant. Corneal transplants are the most common type of transplant, with

a success rate of more than 97 percent. This is a critical surgery that thousands depend on to live their lives to the fullest, and Eversight plays a key role in providing tissue for these transplants in Kalamazoo County.

In 2024, we worked with 171 Kalamazoo County residents

who gave the gift of sight as corneal donors. In the same year, 33 tissues were provided for Kalamazoo County residents to receive a second chance at sight through a corneal transplant.

For more information, visit [www.eversightvision.org](http://www.eversightvision.org)



## 2024 HEALTH & WELL-BEING GRANTS

### **Cheff Therapeutic Riding Center**

Capital Campaign  
General Operations

### **Community AIDS Resource & Education Services of Southwest Michigan (Cares Sexual Wellness Services)**

General Operations

### **Community Healing Centers**

Coming Together Conference

### **Community Outreach and Prevention Network**

General Operations

### **Eversight**

Kalamazoo County Programming

### **Family Health Center**

Back to School Bash  
Facility Improvements

### **Kalamazoo County Juvenile Home Foundation**

Music Therapy Program

### **Kalamazoo Regional Educational Service Agency**

WoodsEdge Music Therapy Program

### **Lending Hands of Michigan**

General Operations

### **Planned Parenthood of Michigan**

Education and Outreach Programs

### **Prevention Works of Southwest Michigan**

Programming

### **West Michigan Cancer Center**

Patient Care Services and Survivorship Program

### **Young Women's Christian Association of Kalamazoo**

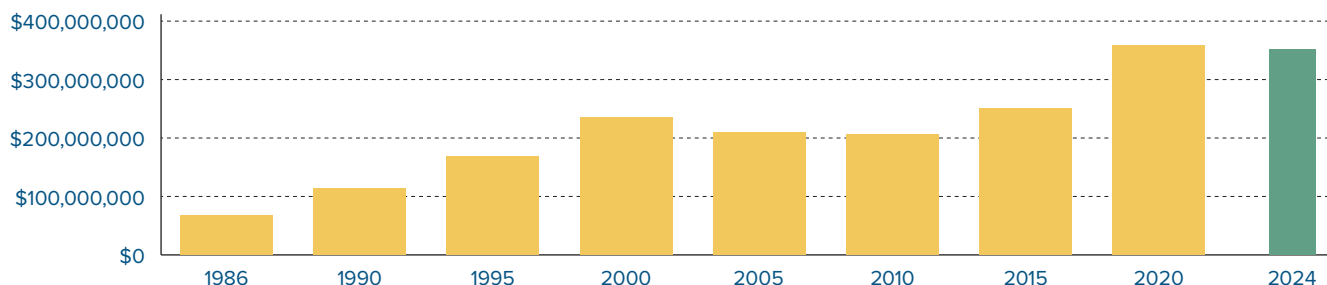
Women and Infant Support for Health Program

# FINANCES

## FINANCIAL HISTORY

In 1972, Irving S. Gilmore created the Foundation that bears his name and funded it with \$5,000 to continue his commitment to the arts and critical needs of the community. Upon Mr. Gilmore’s death on January 17, 1986, his Will provided for the distribution of the residue of his estate, which represented the majority of his assets, to the Foundation. The date-of-death value of his estate’s residue – the net bequest to the Foundation – was \$67 million. On December 31, 2024, Foundation investments were valued at \$352 million. For more details on the Foundation’s financials please see our companion Annual Investment Report.

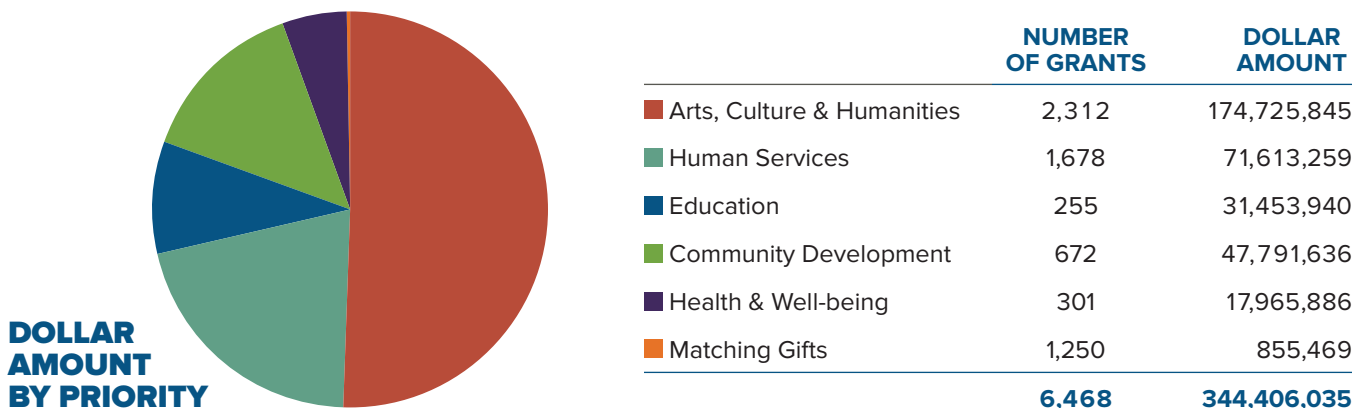
## INVESTED ASSETS



As of 12/31/2024 \$352 million.

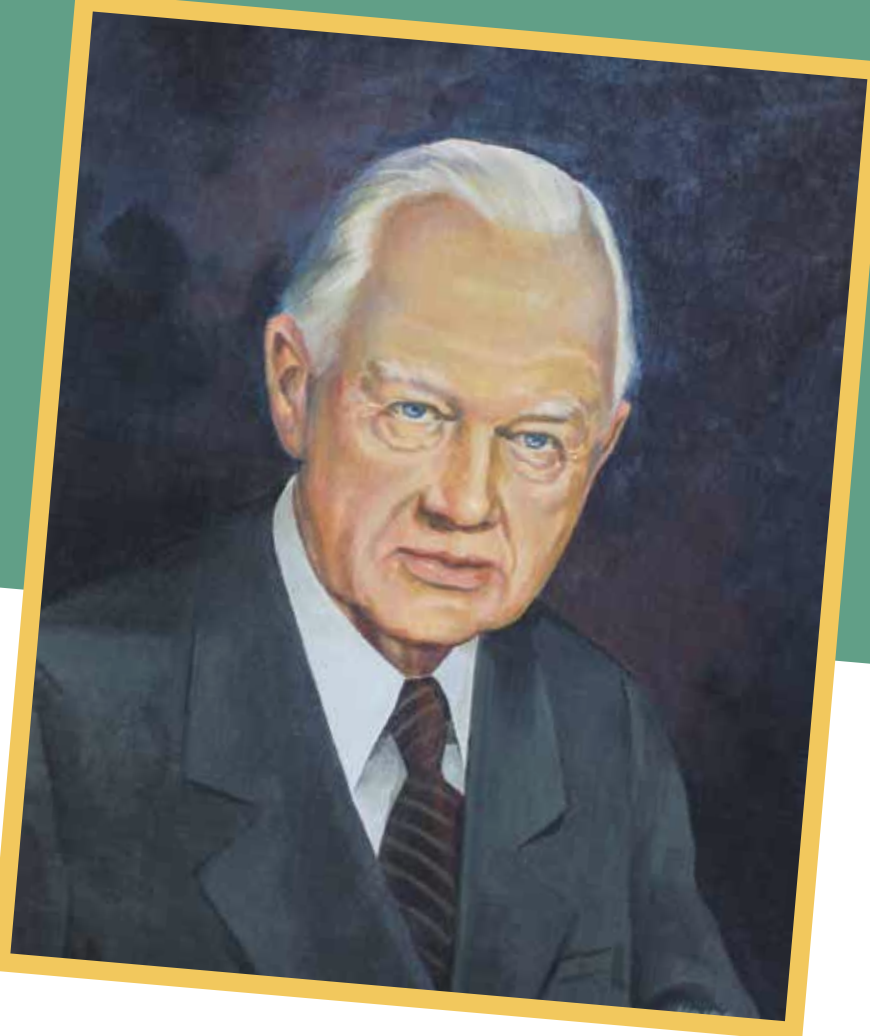
## GRANTS SINCE INCEPTION

Since 1986, the Foundation has awarded 6,468 grants to over 558 organizations. The following chart illustrates the totals by each program area the Foundation supports:



For full financials, please visit [www.isgilmore.org/financials](http://www.isgilmore.org/financials)

Irving S. Gilmore  
FOUNDATION



2024 ANNUAL INVESTMENT REPORT

**For more details on the Foundation's finances and investments please see our companion Annual Investment Report.**

# TRUSTEES & STAFF 2024

## HISTORY OF TRUSTEE SERVICE

### Harold Jacobson

September 1972 – October 1976

### Arthur Homer

September 1972 – October 1982

### Richard M. Hughey, Sr.

September 1972 – September 2009

October 2009 - July 2012 (Emeritus)

### Harold H. Holland

October 1976 – July 1999

### Floyd L. Parks

October 1982 – Present

### W. Jack Keiser

January 1986 – October 1990

### Russell L. Gabier

November 1989 – November 2013

December 2013 – February 2018

(Emeritus)

### Frederick W. Freund

September 1999 – June 2007

### Charles D. Wattles

January 2006 – Present

### Howard D. Kalleward

October 2007 – October 2012

November 2012 – December 2023

(Emeritus)

### Robert T. McDonough

October 2007 – July 2009

### Judith H. Moore

April 2010 – Present

### Ronald N. Kilgore

October 2012 – April 2024

May 2024 – January 2025

(Emeritus)

### Robert M. Beam

September 2013 – Present

### Mason G. Coleman

November 2017 – Present

### Robert T. Ezelle

December 2023 – Present

## COMMITTEE MEMBERS

### AUDIT

#### COMMITTEE

Christina M. Adams\*

Robert M. Beam

Mason G. Coleman

Barbara L. James\*

Floyd L. Parks

Charles D. Wattles (Chair)

### INVESTMENT

#### COMMITTEE

Marilee K. Bartl\*

Robert M. Beam

Mason G. Coleman

Carol E. Duck

Frederick D. Fischer\*

Richard M. Hughey, Jr.

David C. O'Donovan\*

Floyd L. Parks

Carol R. Snapp

Charles D. Wattles (Chair)

### MANAGEMENT

#### COMMITTEE

Robert M. Beam

Mason G. Coleman

Carol E. Duck

Robert T. Ezelle

Richard M. Hughey, Jr.

Judith H. Moore

Floyd L. Parks (Chair)

Carol R. Snapp

Charles D. Wattles

### PROGRAM

#### COMMITTEE

Robert M. Beam

Kristy S. Brady

Mason G. Coleman

Carol E. Duck

Robert T. Ezelle

David D. Gardiner\*

Bruce R. Grubb\*

Richard M. Hughey, Jr.

Judith H. Moore (Chair)

Jeff W. Patton

Carol R. Snapp

\*External Committee Members

# BOARD OF TRUSTEES



**Floyd L. Parks**  
Chairman



**Mason G. Coleman**  
President



**Judith H. Moore**  
First Vice President



**Charles D. Wattles**  
Treasurer



**Robert M. Beam**  
Secretary



**Robert T. Ezelle**

*The Foundation thanks Ron Kilgore for his years of service to this Foundation and all of Kalamazoo.*

# STAFF MEMBERS



**Richard M. Hughey, Jr.**  
Executive Vice  
President/CEO



**Carol E. Duck, CPA**  
Vice President –  
Administration



**Carol R. Snapp**  
Vice President –  
Program



**Anita M. Porter**  
Executive Assistant



**Kristy Brady**  
Program Associate

## IRVING S. GILMORE FOUNDATION

136 East Michigan Avenue, Suite 900

Kalamazoo, Michigan 49007

[www.isgilmore.org](http://www.isgilmore.org)